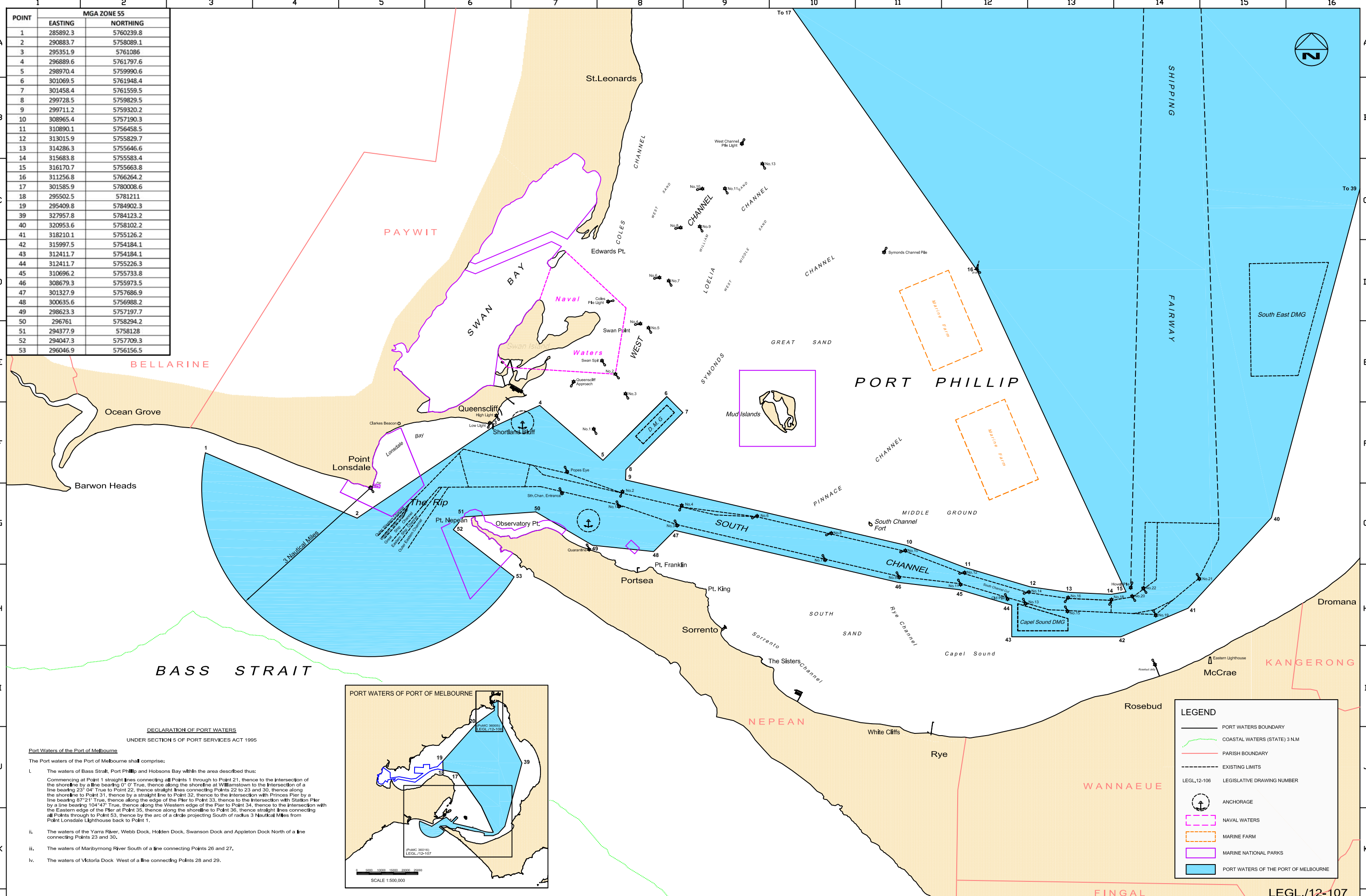


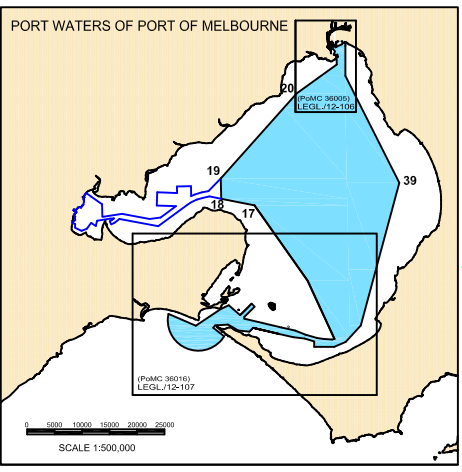
POINT	MGA ZONE 55	
	EASTING	NORTHING
1	285892.3	5760239.8
2	290883.7	5758089.1
3	295351.9	5761086
4	296889.6	5761797.6
5	298970.4	5759990.6
6	301069.5	5761948.4
7	301458.4	5761559.5
8	299728.5	5759829.5
9	299711.2	5759320.2
10	308965.4	5757190.3
11	310890.1	5756458.5
12	313015.9	5755829.7
13	314286.3	5755646.6
14	315683.8	5755583.4
15	316170.7	5755663.8
16	311256.8	5766264.2
17	301585.9	5780008.6
18	295502.5	5781211
19	295409.8	5784902.3
39	327957.8	5784123.2
40	320953.6	5758102.2
41	318210.1	5755126.2
42	315997.5	5754184.1
43	312411.7	5754184.1
44	312411.7	5755226.3
45	310696.2	5755733.8
46	308679.3	5755973.5
47	301327.9	5757686.9
48	300635.6	5756988.2
49	298623.3	5757197.7
50	296761	5758294.2
51	294377.9	5758128
52	294047.3	5757709.3
53	296046.9	5756156.5



**DECLARATION OF PORT WATERS**  
UNDER SECTION 5 OF PORT SERVICES ACT 1995

**Port Waters of the Port of Melbourne**

- The Port waters of the Port of Melbourne shall comprise:
- The waters of Bass Strait, Port Phillip and Hobsons Bay within the area described thus:  
Commencing at Point 1 straight lines connecting all Points 1 through to Point 21, thence to the intersection of the shoreline by a line bearing 0° True, thence along the shoreline at Williamsstown to the intersection of a line bearing 23° 04' True to Point 22, thence straight lines connecting Points 22 to 23 and 30, thence along the shoreline to Point 31, thence by a straight line to Point 32, thence to the intersection with Princes Pier by a line bearing 87° 21' True, thence along the edge of the Pier to Point 33, thence to the intersection with Station Pier by a line bearing 104° 47' True, thence along the Western edge of the Pier to Point 34, thence to the intersection with the Eastern edge of the Pier at Point 35, thence along the shoreline to Point 36, thence straight lines connecting all Points through to Point 53, thence by the arc of a circle projecting South of radius 3 Nautical Miles from Point Lonsdale Lighthouse back to Point 1.
  - The waters of the Yarra River, Webb Dock, Holden Dock, Swanson Dock and Appleton Dock North of a line connecting Points 23 and 30.
  - The waters of Maribymong River South of a line connecting Points 26 and 27.
  - The waters of Victoria Dock West of a line connecting Points 28 and 29.

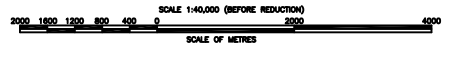


LEGEND	
	PORT WATERS BOUNDARY
	COASTAL WATERS (STATE) 3 N.M.
	PARISH BOUNDARY
	EXISTING LIMITS
	ANCHORAGE
	NAVAL WATERS
	MARINE FARM
	MARINE NATIONAL PARKS
	PORT WATERS OF THE PORT OF MELBOURNE



PLAN No.	PREVIOUS PLAN TITLE	DATE
35379-2	PORT WATERS OF PORT OF MELBOURNE LEGISLATIVE REVISION	July 2008
35379-1	PORT WATERS OF PORT OF MELBOURNE LEGISLATIVE REVISION	June 2008
35379	PORT WATERS OF PORT OF MELBOURNE LEGISLATIVE REVISION	May 2008

Co-ordinate system is the MGA (GDA84)  
94, Zone 55, Central Meridian 147 degrees East.  
All values are in Metres.



MANAGER SURVEY	SURVEYED
PROCESSED	DRAWN G.J. Pearce 2008/2012
CHECKED	JOB FILE No. H00410/12

PORT OF MELBOURNE CORPORATION			
PORT WATERS OF THE PORT OF MELBOURNE			
LEGISLATIVE DEFINITION REVISION			
SHEET No. 2 of 2	SHEET SIZE A0	SCALE 1:40,000	PLAN No. 36016
		AMENDMENT	