

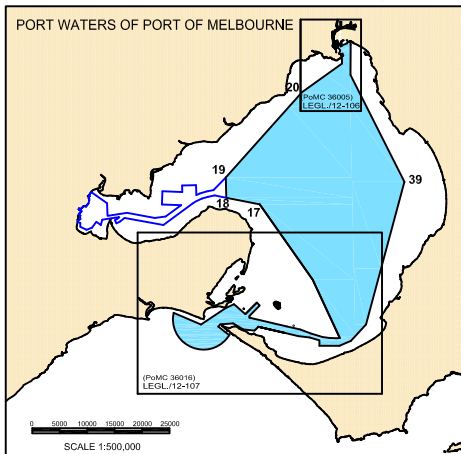
CUT PAW PAW

DECLARATION OF PORT WATERS
UNDER SECTION 5 OF PORT SERVICES ACT 1995

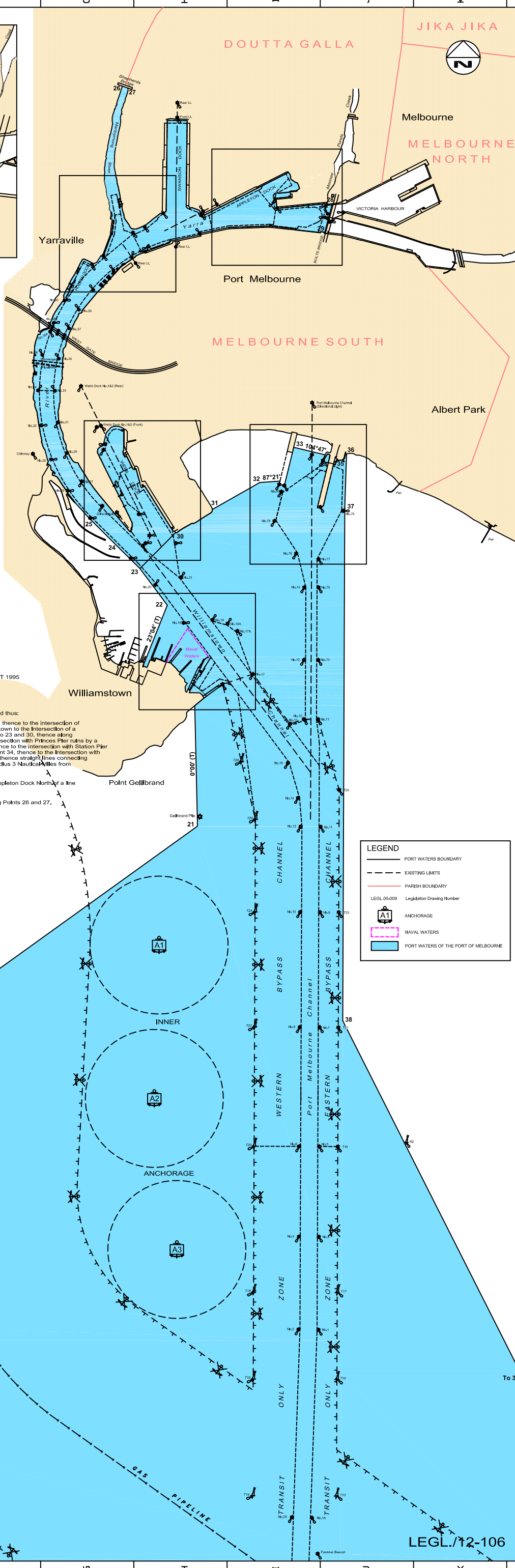
Port Waters of the Port of Melbourne

The Port waters of the Port of Melbourne shall comprise:

- i. The waters of Bass Strait, Port Phillip and Hobsons Bay within the area described thus: Commencing at Point 1 straight lines connecting all Points 1 through to Point 21, thence to the intersection of the shoreline by a line bearing 0° 0' True, thence along the shoreline at Williamstown to the intersection of a line bearing 23° 04' True to Point 22, thence straight lines connecting Points 22 to 23 and 30, thence along the shoreline to Point 31, thence by a straight line to Point 32, thence to the intersection with Princes Pier runs by a line bearing 87° 21' True, thence along the edge of the Pier runs to Point 33, thence to the intersection with Station Pier by a line bearing 104° 47' True, thence along the Western edge of the Pier to Point 34, thence to the intersection with the Eastern edge of the Pier at Point 35, thence along the shoreline to Point 36, thence straight lines connecting all Points through to Point 53, thence by the arc of a circle projecting South of radius 3 Nautical Miles from Point Lonsdale Lighthouse back to Point 1.
- ii. The waters of the Yarra River, Webb Dock, Holden Dock, Swanson Dock and Appleton Dock North of a line connecting Points 23 and 30.
- iii. The waters of Maribyrnong River South of a line at Shepherds Bridge connecting Points 26 and 27.
- iv. The waters of Victoria Dock West of a line connecting Points 28 and 29.



POINT	MGA ZONE 55	
	EASTING	NORTHING
17	301585.9	5780008.6
18	295502.5	5781211
19	295409.8	5784902.3
20	309282.9	5800434.2
21	316571.8	5805680
22	316248.1	5808054.5
23	315954	5808448.4
24	315703.3	5808695.6
25	315408.5	5808989
26	315765.3	5813631.8
27	315823.2	5813611.5
28	318017.6	5812357.2
29	317939.9	5812062.6
30	316336.8	5808834.3
31	316733	5809083.3
32	317242.2	5809373
33	317605.5	5809751.2
34	317977.8	5809586.5
35	318052.8	5809567.1
36	318173.5	5809680.6
37	318154.3	5809071.1
38	318132.3	5803590.7
39	327957.8	5784123.2



LEGEND

- PORT WATERS BOUNDARY
- - - EXISTING LIMITS
- PARISH BOUNDARY
- LEG/00-009 Legislation Drawing Number
- A1 ANCHORAGE
- NAVAL WATERS
- PORT WATERS OF THE PORT OF MELBOURNE

PORT OF MELBOURNE CORPORATION
PORT WATERS OF THE PORT OF MELBOURNE
LEGISLATIVE DEFINITION REVISION

MANAGER SURVEY
DRAWN G. J. Parnis 20/09/2012
CHECKED JOB FILE No. HQ44/012

SHEET No. 1 of 2
SHEET SIZE / SCALE 1:15000
POINTS 36005

DATE July 2008
PREVIOUS PLAN TITLE PORT WATERS OF THE PORT OF MELBOURNE LEGISLATIVE DEFINITION
35278-2
35278-1
35278

LOCALITY PLAN VICTORIA

LEGAL/12-106