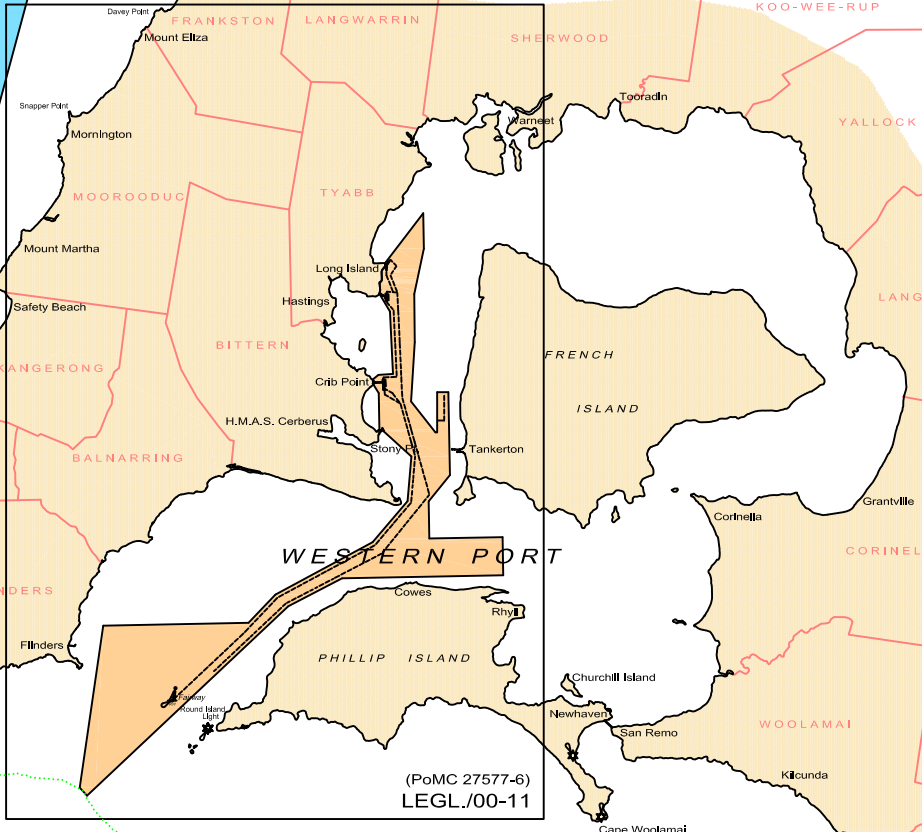
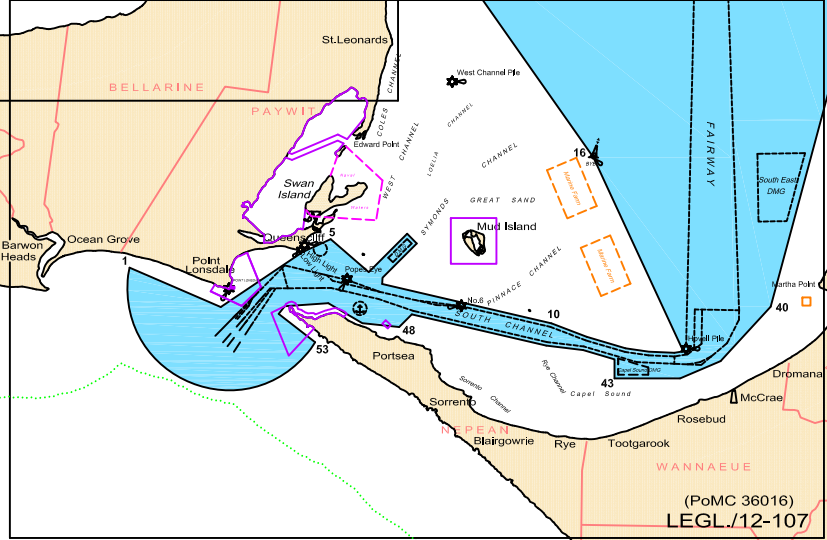
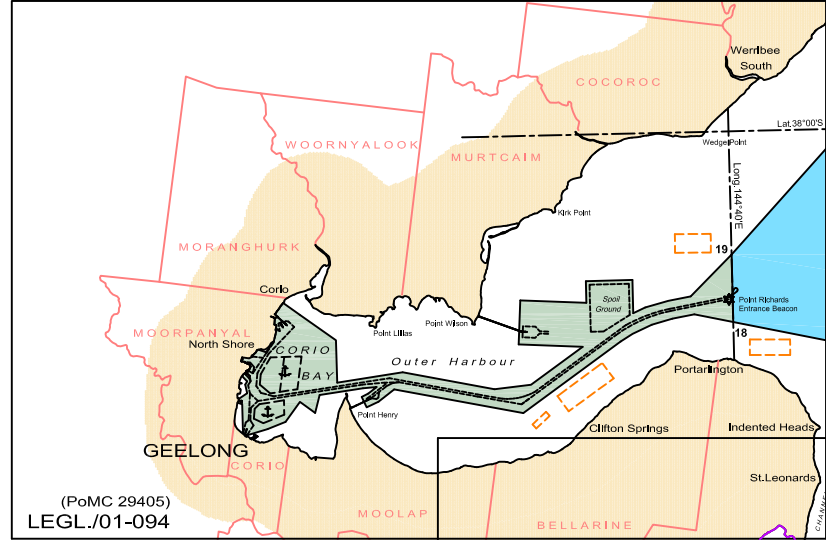
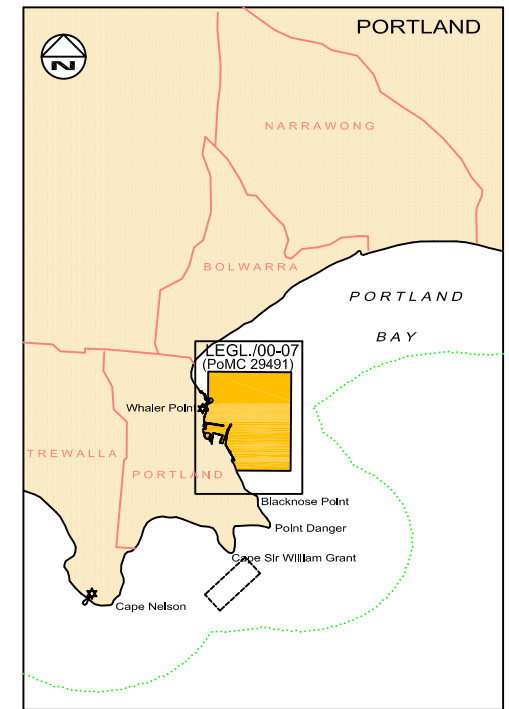


LEGEND

- PORT WATERS BOUNDARY
- COASTAL WATERS (STATE) 3 NM
- - - EXISTING LIMITS
- PARISH BOUNDARY
- LEGL.12-106 LEGISLATIVE DRAWING NUMBER
- NAVAL WATERS
- ⚓ ANCHORAGE
- MARINE FARM
- MARINE NATIONAL PARKS
- PORT WATERS OF THE PORT OF MELBOURNE
- PORT WATERS OF THE PORT OF GEELONG
- PORT WATERS OF THE PORT OF HASTINGS
- PORT WATERS OF THE PORT OF PORTLAND



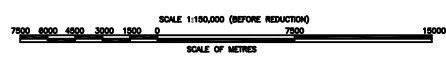
INDEX TO REVISIONS

YEAR	1996		2000		2001		2008		2012	
DESCRIPTION	LEGL. No.	PoMC No.	LEGL. No.	PoMC No.	LEGL. No.	PoMC No.	LEGL. No.	PoMC No.	LEGL. No.	PoMC No.
INDEX	-	-	-	-	01-093	29472-1	07-365	35377-2	12-105	36004
MELBOURNE	95-132	27577-1	00-009	29406	-	-	07-366	35378-2	12-106	36005
SOUTH CHANNEL	95-132	27577-1	00-010	29407	-	-	07-367	35379-2	12-107	36016
GEELONG	95-132	27577-4	00-008	29405	01-094	29405-1	-	-	-	-
HASTINGS	95-133	27577-6	00-011	29408	-	-	-	-	-	-
PORTLAND	-	-	00-007	29491	-	-	-	-	-	-



PLAN No.	PREVIOUS PLAN TITLE	DATE
35377-2	LEGISLATIVE DEFINITION REVISION AND KEY TO SHEETS	29/7/2008
35377-1	LEGISLATIVE DEFINITION REVISION AND KEY TO SHEETS	June 2008
35377	LEGISLATIVE DEFINITION REVISION AND KEY TO SHEETS	May 2008

• Co-ordinate system is the MGA (GDA94), Zone 55, Central Meridian 147 degrees East.
 • All values are in Metres.



MANAGER SURVEY	SURVEYED
PROCESSED	DRAWN
CHECKED	JOB FILE No.

PORT OF MELBOURNE CORPORATION
VICTORIAN PORT WATERS
 LEGISLATIVE DEFINITION REVISION

SHEET No. **36004** AMENDMENT

LEGL./12-105