

The following Notice to Mariners is published for general information

**Australia – Victoria****No. 338 (T) - 2026****PORT OF MELBOURNE  
HOLDEN DOCK  
BERTH REMEDIATION WORKS****Date:** 3 July 2026**Refers:** N/A**Details:** Mariners are advised that berth remediation works, involving under wharf works from a work boat and pontoons, will be undertaken from **6 July 2026** at **Holden Dock** berth until further notice.

Works will be conducted Monday to Friday, 0700 hrs to 1700 hrs, when the berth is vacant and **around shipping movements**.

The following applies **when works are being conducted**:

1. No **under wharf works** when a **commercial vessel (SOLAS)** is berthed at Holden Dock
2. **30 minutes** prior to a **commercial vessel (SOLAS)**, including the bunker vessel, arriving at Holden Dock, **under wharf works to cease**
3. **30 minutes** prior to a **commercial vessel (SOLAS)**, including the bunker vessel passing Holden Dock, **under wharf works to cease**

Restrictions for **domestic commercial vessels** and **recreational vessels** during works:

- ***Minimum wake and wash***
- ***Minimum passing distance of 50m***

Vessel supporting works can be contacted on VHF Channel 12.

**Mariners are advised to navigate with additional caution in the vicinity of Holden Dock during works.**

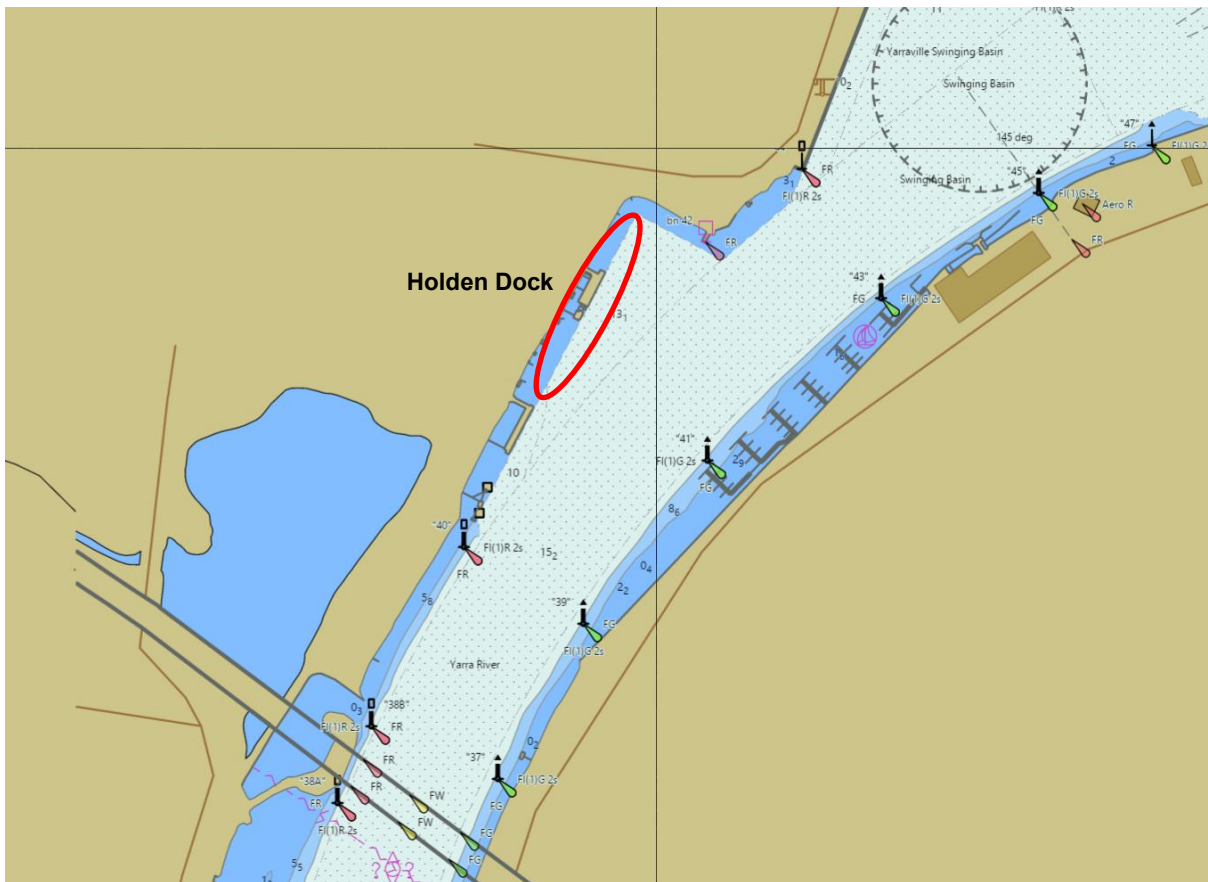
For further information, please email the Navigation Services department at [NavigationServices@ports.vic.gov.au](mailto:NavigationServices@ports.vic.gov.au) or contact Melbourne VTS on 9644 9700 / VHF Channel 12.

**Charts & Publications affected:** ENC AU5MEL01

Further notice:

Further notice will be issued

**David Tilsley**  
**Deputy Harbour Master**  
**Melbourne**



**NOT FOR NAVIGATIONAL USE**