

The following Notice to Mariners is published for general information

Australia – Victoria

No. 270 (T) - 2026

**PORT OF MELBOURNE
SOUTH CHANNEL
REDUCED DUKC NODE WIDTH**

Date: 20 May 2026

Refers: NtM 164 (T) – 26 and is hereby cancelled

Details: Mariners are advised that sand wave shoaling extends into the navigational channel in the following locations:

- South Channel, southern toe line, **Entrance Beacon to Beacon No.1.**
- South Channel, northern toe line, **Beacon No.4 and Beacon No.6.**

Masters and Pilot Service Providers are advised the **width** of the **Dynamic Under Keel Clearance (DUKC) system nodes** in South Channel for the affected shoal areas have been reduced by a maximum of **50 m** (refer Chartlet 1 and 2). **Commercial vessels (SOLAS)** transiting South Channel with a **draught of 11.6 m or greater** operating under the DUKC system shall not transit within the excluded area.

Commercial vessels (SOLAS) transiting South Channel with a draught **less than 11.6 m** are to navigate with additional caution when passing a DUKC vessel (draught 11.6m or greater) and provide sufficient sea room, considering the reduced width of DUKC nodes.

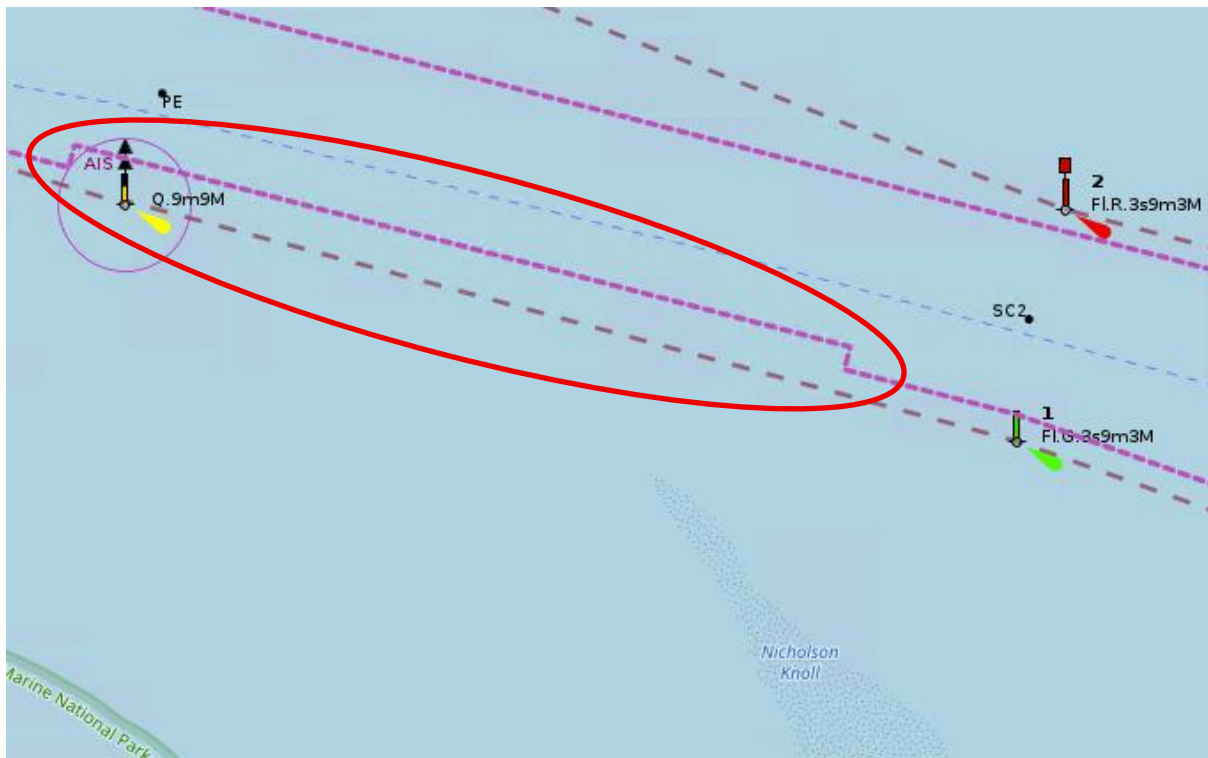
Masters and Pilots are advised to navigate with additional caution in South Channel.

For further information, please email the Navigation Services department at NavigationServices@ports.vic.gov.au.

Charts & Publications affected: ENC AU5RIP01

Further notice: Further notice will be issued

**Andrew Hays
Harbour Master
Melbourne**



Chartlet 1 – South Channel, Entrance Beacon to Beacon No.1.
NOT FOR NAVIGATIONAL USE



Chartlet 2 - South Channel, Beacon No.4 to Beacon No.6.
NOT FOR NAVIGATIONAL USE