

The following Notice to Mariners is published for general information

Australia – Victoria

No. 257 - 2026

**PORT OF MELBOURNE
PORT PHILLIP
WRECKS**

Date: 4 May 2026

Refers: N/A

Details: Mariners are advised that **two wrecks** (recreational vessels approximately 4 metres in length) exist in the following positions:

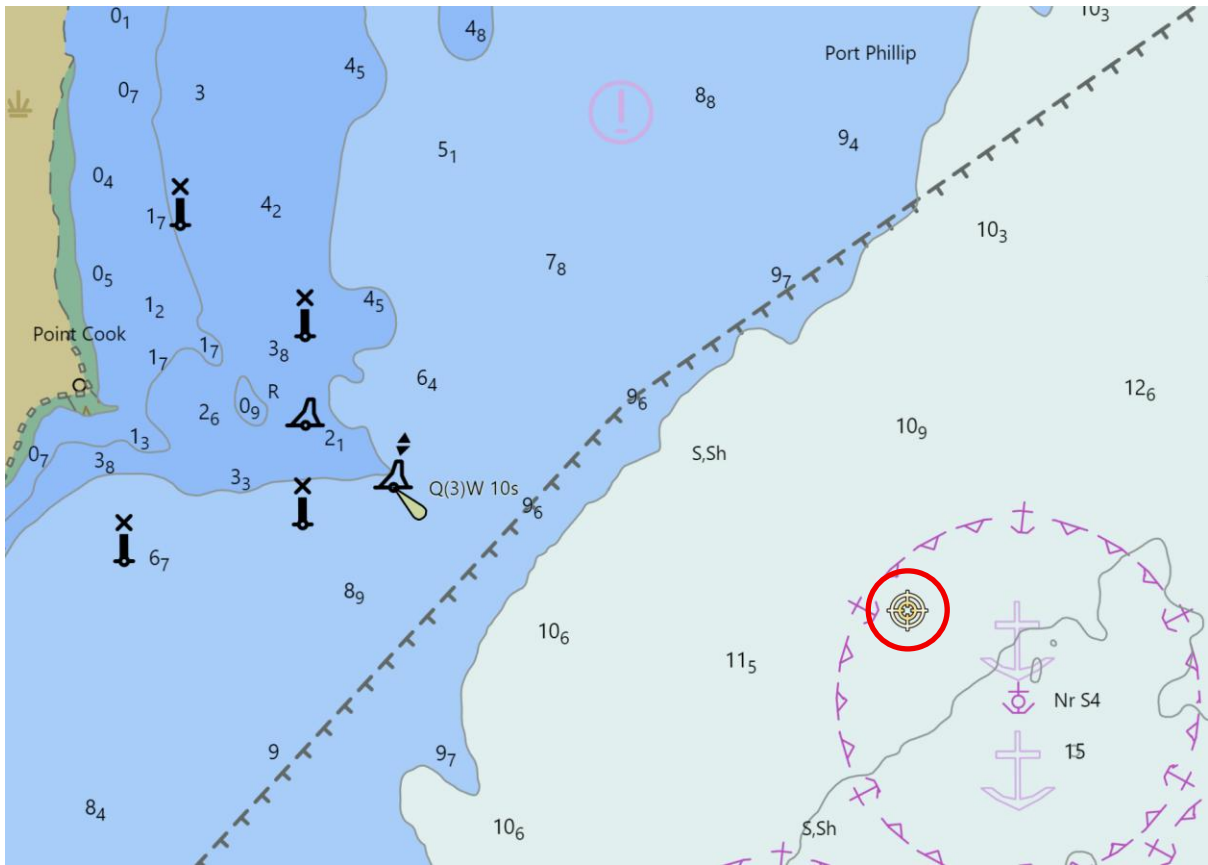
	Position	Least Depth
Wreck 1	37° 55.988' S, 144° 50.779' E	12.67m
Wreck 2	37° 55.592' S, 144° 50.886' E	10.30m

For further information, please email the Navigation Services department at NavigationServices@ports.vic.gov.au.

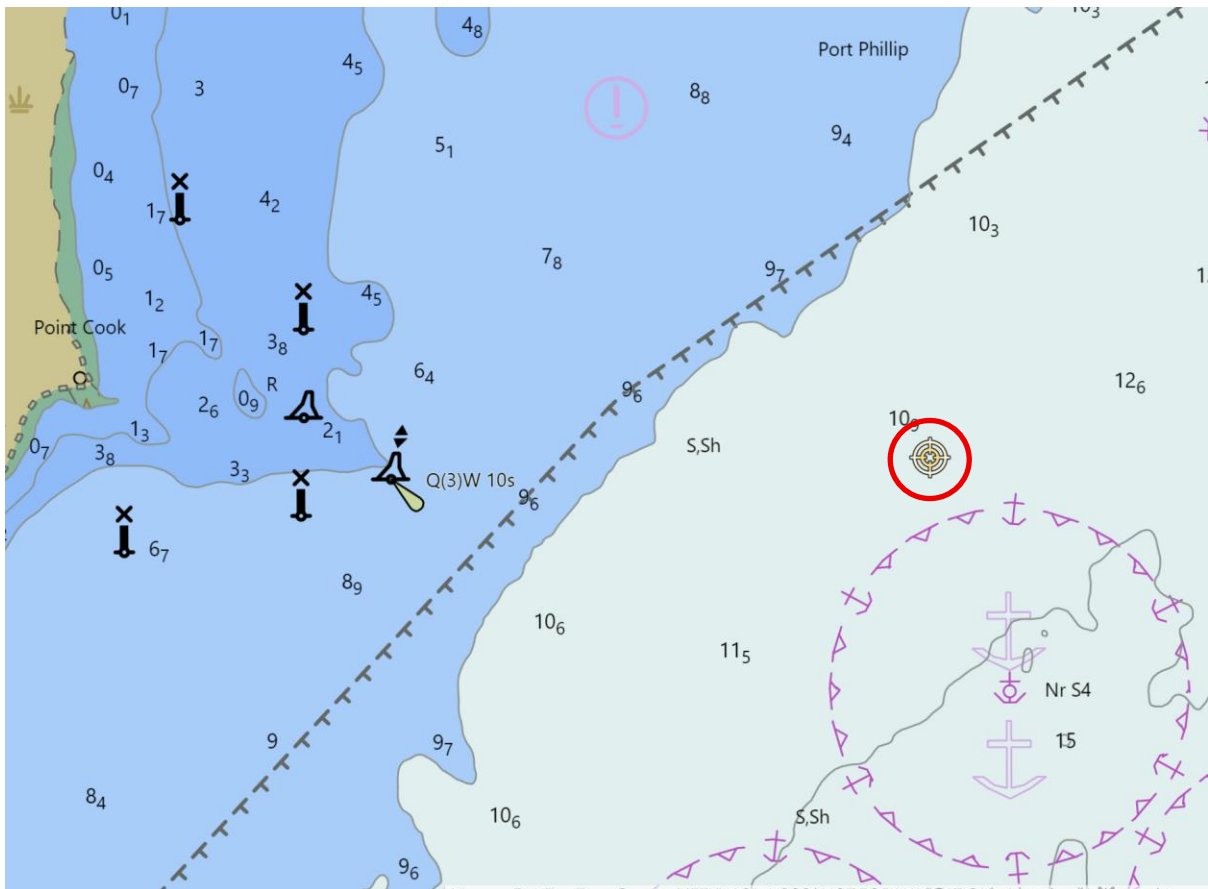
Charts & Publications affected: AUS 143

Further notice: No further notice will be issued

**Andrew Hays
Harbour Master
Melbourne**



WRECK 1 POSITION - NOT FOR NAVIGATIONAL USE



WRECK 2 POSITION - NOT FOR NAVIGATIONAL USE