

The following Notice to Mariners is published for general information

Australia – Victoria

No. 241 (T) - 2026

PORT OF MELBOURNE
PORT PHILLIP
SCIENTIFIC EQUIPMENT

Date: 22 April 2026

Refers: N/A

Details: Mariners are advised that **scientific equipment** has been deployed on the sea floor in the following positions until further notice:

Location	Latitude	Longitude	Minimum Depth above equipment
Adjacent to Transit Only Zone (TOZ)	38° 0.000' S	144° 54.608' E	17.75m
Golf Anchorages	38° 2.667' S	144° 47.357' E	20.05m

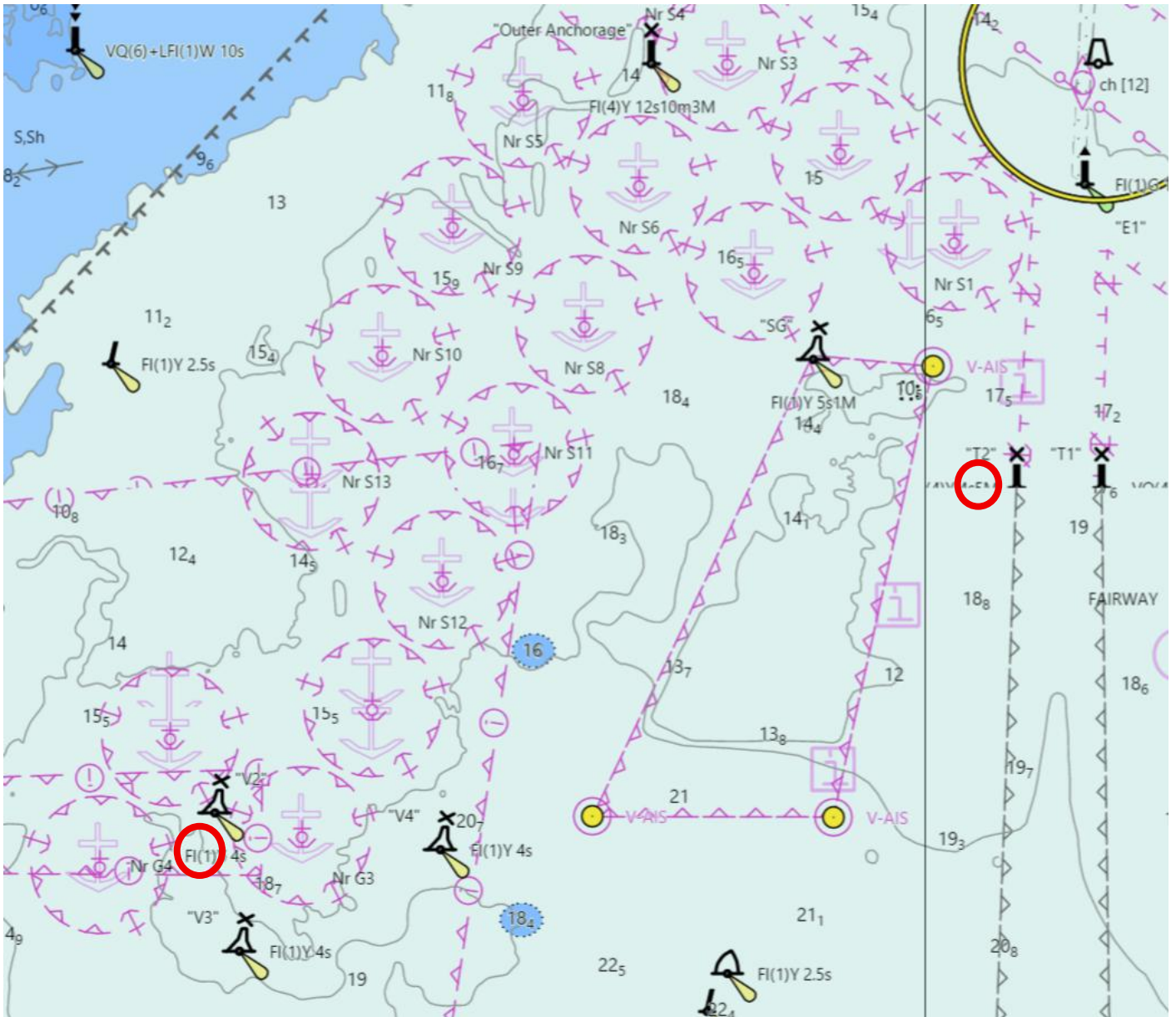
The equipment is mounted in a frame 1.0m (L) x 1.0m (W) x 0.75m (H).

For further information, please email the Navigation Services department at NavigationServices@ports.vic.gov.au.

Charts & Publications affected: AUS 143, AUS 157
ENC AU5MEL01

Further notice: Further notice will be issued

Andrew Hays
Harbour Master
Melbourne



NOT FOR NAVIGATIONAL USE