

The following Notice to Mariners is published for general information

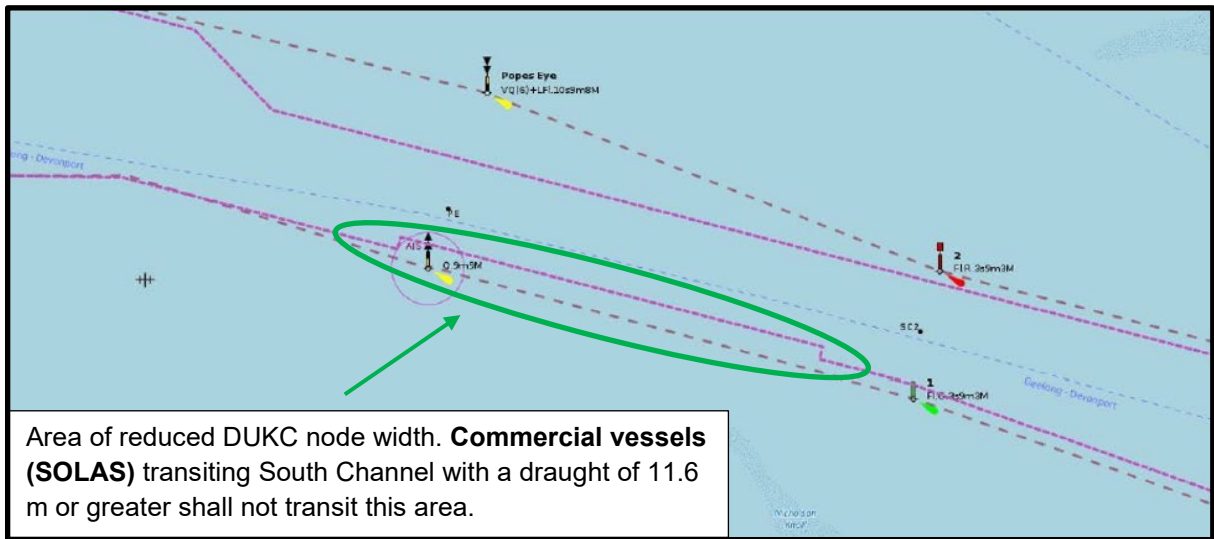
Australia – Victoria

No. 164 (T) - 2026

PORT OF MELBOURNE SOUTH CHANNEL REDUCED DUKC NODE WIDTH

- Date:** 13 March 2026
- Refers:** NtM 598 (T) – 25 and is hereby cancelled
- Details:** Mariners are advised that sand wave shoaling extends up to **50 m** into the navigational channel from the southern toe line between **Entrance Beacon** and **Beacon No.1**.
- Masters and Pilot Service Providers are advised the **width** of the **Dynamic Under Keel Clearance (DUKC) system nodes** in South Channel for the affected shoal areas have been reduced by a maximum of **50 m** from the southern toe line (refer Chartlet 1). **Commercial vessels (SOLAS)** transiting South Channel with a **draught of 11.6 m or greater** operating under the DUKC system shall not transit within the excluded area.
- Commercial vessels (SOLAS)** transiting South Channel with a draught **less than 11.6 m** are to navigate with additional caution when passing a DUKC vessel (draught 11.6m or greater) between Entrance Beacon and Beacon No. 1 and provide sufficient sea room, considering the reduced width of DUKC nodes on the southern toe line.
- Masters and Pilots are advised to navigate with additional caution in South Channel.**
- For further information, please email the Navigation Services department at NavigationServices@ports.vic.gov.au.
- Charts & Publications affected:** ENC AU5RIP01
- Further notice:** Further notice will be issued

**Andrew Hays
Harbour Master
Melbourne**



CHARTLET 1
NOT FOR NAVIGATIONAL USE