

The following Notice to Mariners is published for general information

Australia – Victoria

No. 598 (T) - 2025

**PORT OF MELBOURNE
SOUTH CHANNEL
SAND WAVE SHOALING**

Date: 4 December 2025

Refers: N/A

Details: Mariners are advised that sand wave shoaling has been identified in **South Channel** in the following location (refer Chartlet 1):

- Between **Entrance Beacon** and **Beacon No.1** on the southern toe line

The sand wave shoaling extends up to **40 m** into the navigational channel from the southern toe line between Entrance Beacon and Beacon No.1, with the shoalest depth identified at **14.54 m**.

Masters and Pilot Service Providers are advised the **width** of the **Dynamic Under Keel Clearance (DUKC) system nodes** in South Channel for the affected shoal areas have been reduced by a maximum of **50 m** from the southern toe line (refer Chartlet 2 and 3). **Commercial vessels (SOLAS)** transiting South Channel with a **draught of 11.6 m or greater** operating under the DUKC system shall not transit within the excluded area.

Commercial vessels (SOLAS) transiting South Channel with a draught **less than 11.6 m** are to navigate with additional caution when passing a DUKC vessel (draught 11.6m or greater) between Entrance Beacon and Beacon No. 1 and provide sufficient sea room, considering the reduced width of DUKC nodes on the southern toe line.

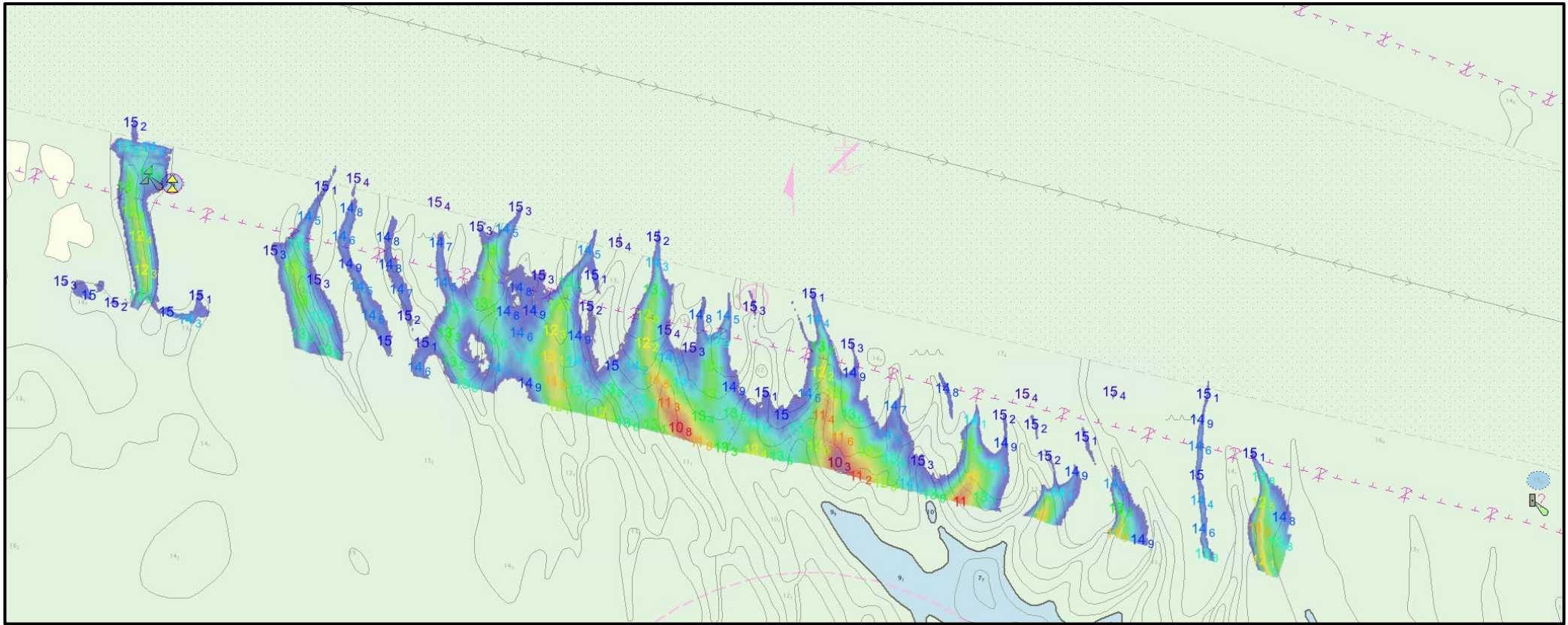
Masters and Pilots are advised to navigate with additional caution in South Channel.

For further information, please email the Navigation Services department at NavigationServices@ports.vic.gov.au.

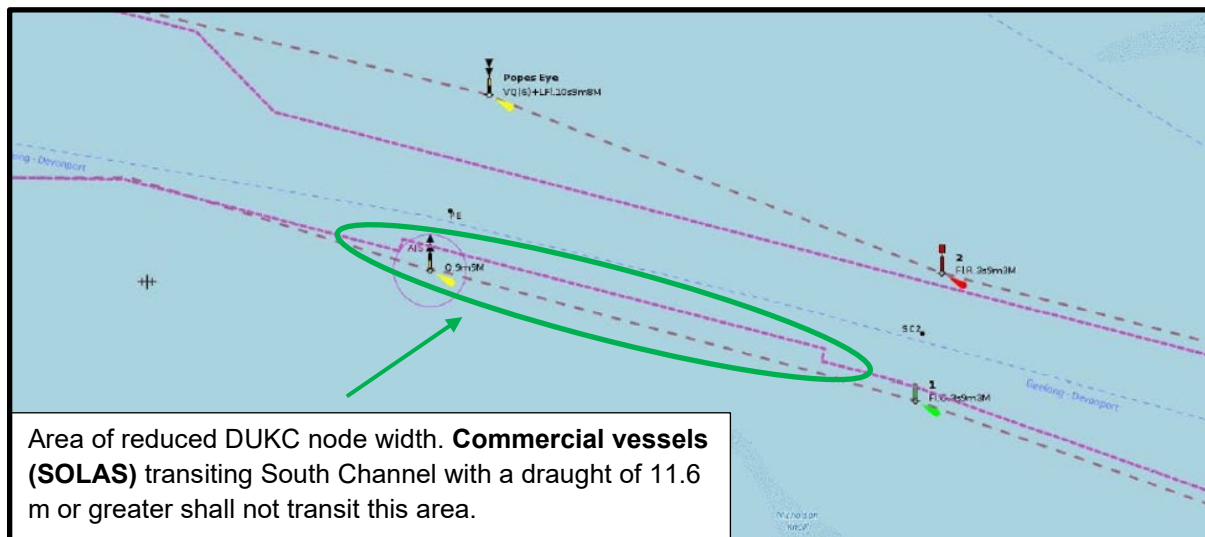
Charts & Publications affected: ENC AU5RIP01

Further notice: Further notice will be issued

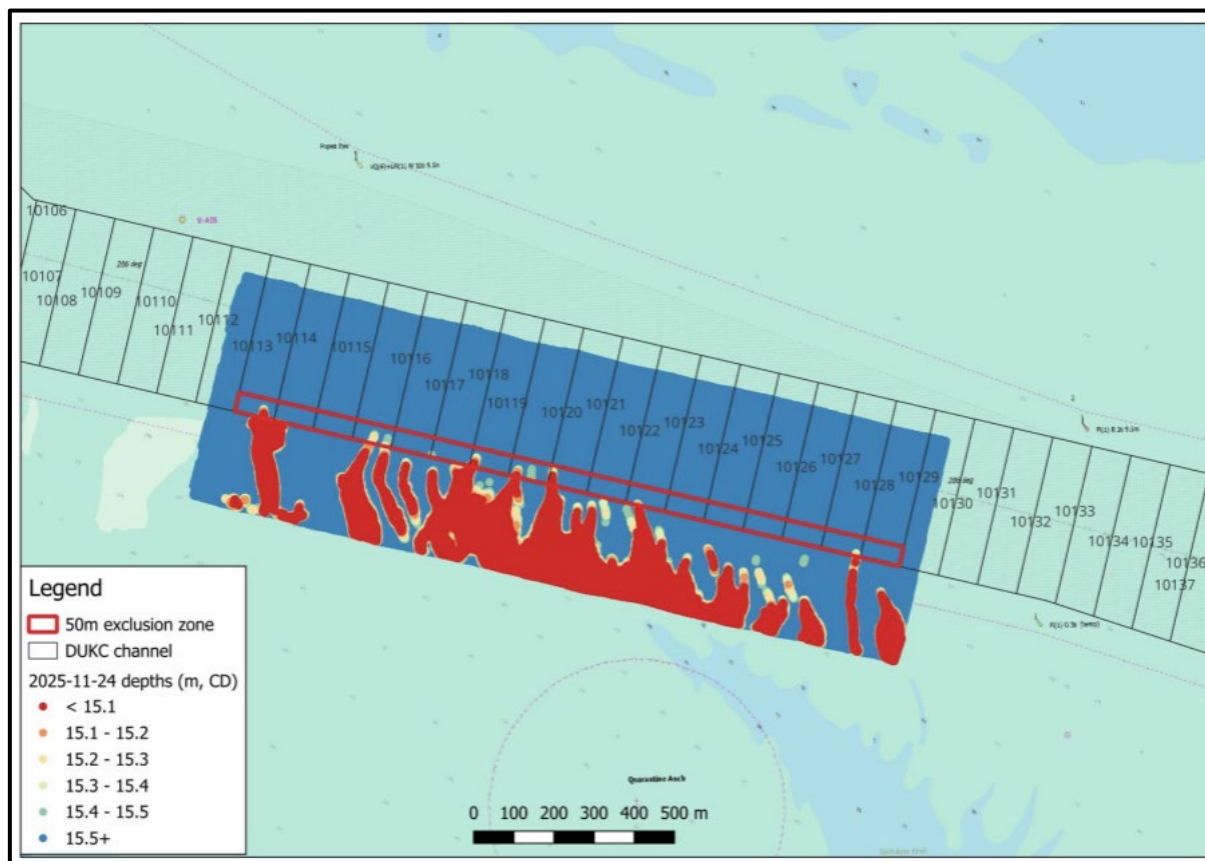
**Andrew Hays
Harbour Master
Melbourne**



CHARTLET 1
NOT FOR NAVIGATIONAL USE



CHARTLET 2
NOT FOR NAVIGATIONAL USE



CHARTLET 3
NOT FOR NAVIGATIONAL USE