

The following Notice to Mariners is published for general information

## Australia – Victoria

No. 589 (T) - 2025

### PORT OF MELBOURNE APPLETON DOCK CHAINAGE RESTRICTION DUE TO WORKS

**Date:** 3 December 2025

**Refers:** NtM 562 (T) – 25 and is hereby cancelled  
NtM 299 (T) – 24

**Details:** Mariners are advised of the forthcoming changes due to apply to **Appleton Dock berth B** chainage restrictions for berth works as follows:

**Appleton Dock berth B** will not be available for commercial vessels (SOLAS) between chainage **0m to 275m** (reference bollard availability diagram) from **0700 hrs on 4 December 2025 until further notice.**

**For vessels berthing from chainage 275m onwards,** the western most bollard on the wharf available for mooring during works is located at chainage **256m.**

On the berths of Appleton Dock **no-go zones** within the **work site** and **mooring line snap back zones** have been established.

For further information, please email the Navigation Services department at [NavigationServices@ports.vic.gov.au](mailto:NavigationServices@ports.vic.gov.au).

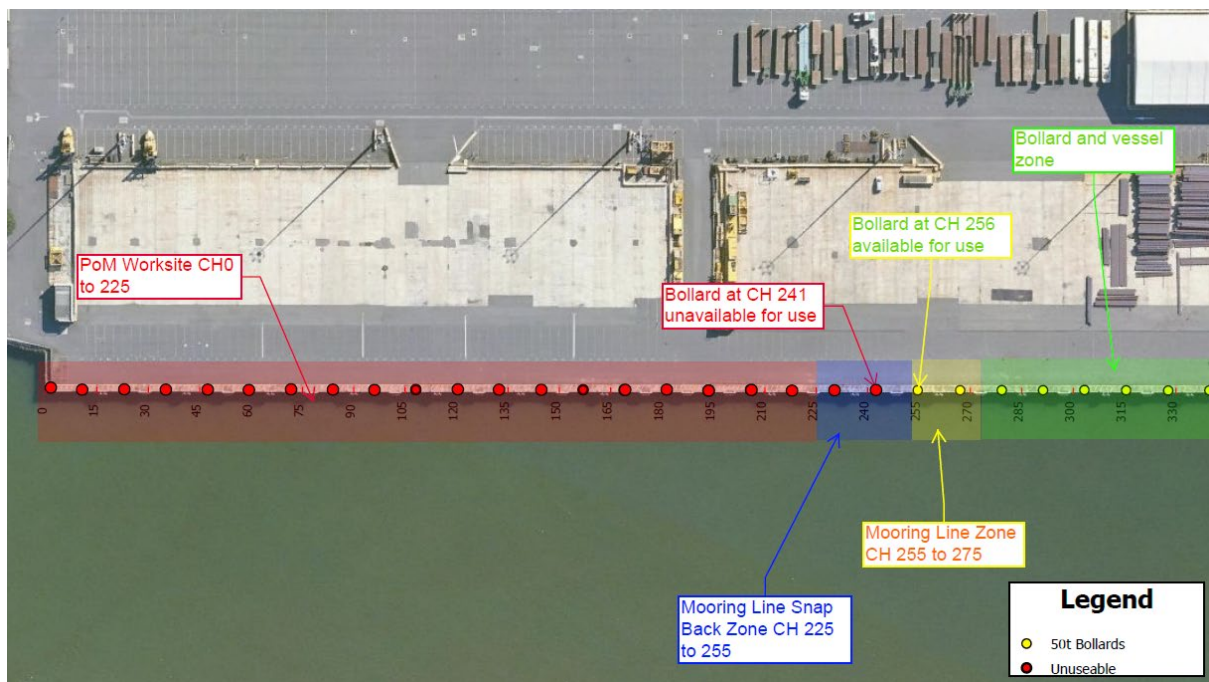
**Charts &  
Publications  
affected:**

ENC AU5MEL01

**Further notice:** Further notice will be issued



**David Tilsley**  
Deputy Harbour Master  
Melbourne



**Appleton Dock berth B – Bollard availability during works**