

Australia – Victoria

No. 570 (T) - 2025

PORT OF MELBOURNE SOUTH CHANNEL BEACON REPLACEMENT WORKS

Date: 20 November 2025

Refers: NtM 486 (T) – 24 and is hereby cancelled

Details: Mariners are advised that beacon replacement works will recommence from **24 November 2025** until further notice for the following beacons in **South Channel** (reference figure 1 and 2):

- **Beacons 1, 3, 4, 6, 7, 8, 9, 10, 11, 12**

Works will be conducted **daily** from **0700 hrs to 1900 hrs**, subject to weather conditions. The works may involve removal of existing beacon topside, installation of new beacon pile, removal of original pile and installation of new beacon topside.

Beacon light arrangements during replacement works as follows:

1. New beacon pile present and original beacon pile present – flashing yellow light installed on new beacon pile – FL (Y)
2. New beacon pile present and original beacon pile removed – temporary light installed on new beacon pile with original beacon light characteristics

The following conditions will apply for the **works**:

1. Prior to the **passing** of a **commercial vessel (SOLAS)**, transiting **South Channel**, works, diving and crane operations to cease.
2. *AMS Gladstone, PB162* and work vessels may be moored **during works** in adjacent waters to South Channel **Beacons 1 and 3**.
3. Work vessels may be moored **during works** in adjacent waters to South Channel **Beacons 4, 6, 7, 8, 9, 10, 11 and 12**.
4. *AMS Gladstone, PB162* and work vessels are fitted with **AIS**.
5. Dive vessels will display International Code flag Alpha during diving operations.

Restrictions for **commercial vessels (SOLAS)** transiting **South Channel** during works when *AMS Gladstone, PB162* and work vessels are on location:

- **Maximum speed 12kts, minimum wash where possible when passing**
- **Minimum passing distance 50m** (from barge, mooring anchors and work vessels)

Restrictions for passing domestic commercial vessels and recreational vessels during **works**:

- ***Minimum wake and wash***
- ***Minimum passing distance of 50m***

The works may involve either of the following **vessels**:

- *AMS Gladstone (64m LOA barge with 250t crane)*
- *PB 162 (18m LOA barge)*
- *Ando (tug)*
- *Allunga (tug)*
- *Henk*
- *Lobo*
- *Eliza*

Works supervisor can be contacted on **0488 939 222**. Vessels supporting works can be contacted on VHF Channel 12.

Mariners are advised to navigate with additional caution in the vicinity of South Channel beacons during beacon replacement works.

For further information, please email the Navigation Services department at NavigationServices@ports.vic.gov.au or contact Melbourne VTS on 9644 9700 / VHF Channel 12.

**Charts &
Publications
affected:**

ENC AU5MEL01

Further notice:

Further notice will be issued



**David Tilsley
Deputy Harbour Master
Melbourne**

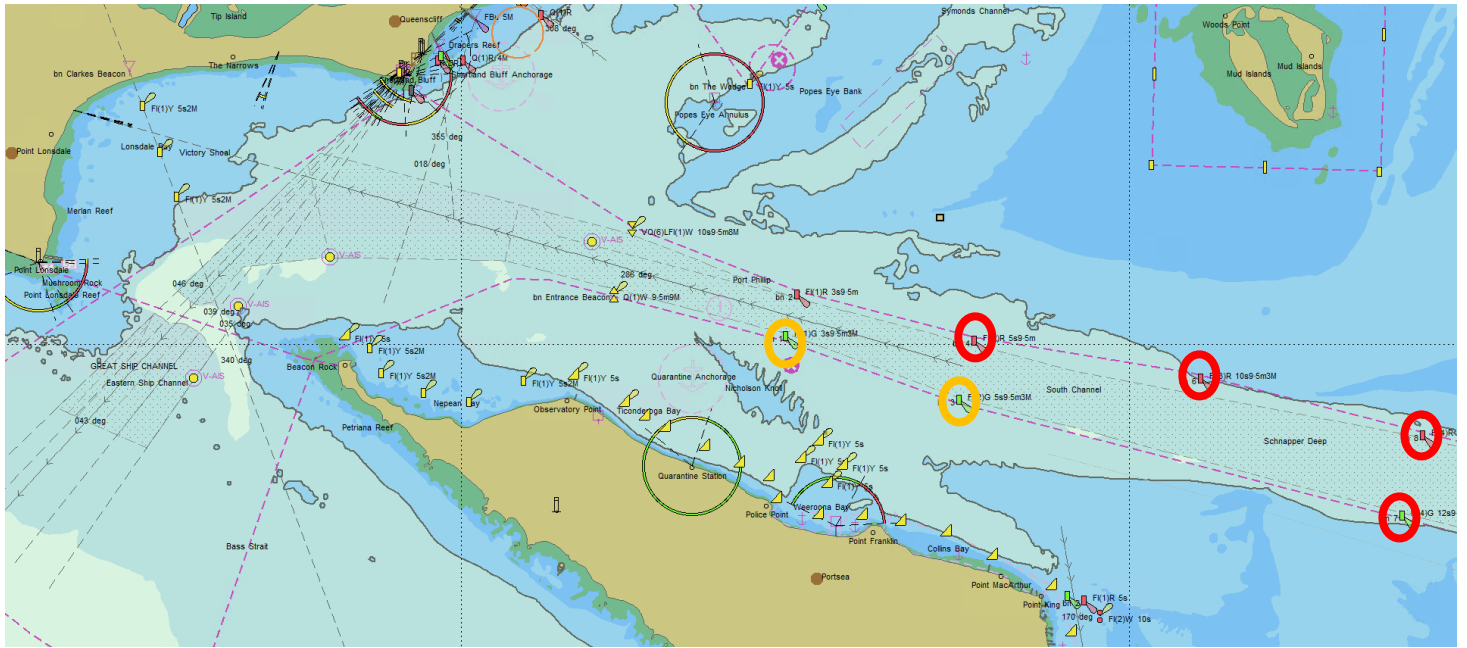




Figure 1 - NOT FOR NAVIGATIONAL USE



Figure 2 - NOT FOR NAVIGATIONAL USE

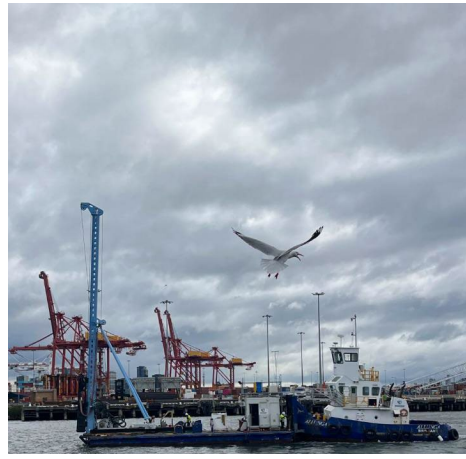
- 

AMS Gladstone, PB 162 or work vessels may be moored **during works** in adjacent waters to beacons 1 and 3. Restrictions for commercial vessels (SOLAS): **maximum speed 12kts, minimum wash where possible when passing, minimum passing distance 50m**
- 

Work vessels may be moored **during works** in adjacent waters to beacons 4, 6, 7, 8, 9, 10, 11 and 12. Restrictions for commercial vessels (SOLAS): **maximum speed 12kts, minimum wash where possible when passing, minimum passing distance 50m**



AMS Gladstone



PB 162



Allunga



Ando



Henk



Lobo / Eliza