

The following Notice to Mariners is published for general information

Australia – Victoria

No. 556 (T) - 2025

PORT OF MELBOURNE SOUTH WHARF BERTH 32 REMEDICATION WORKS

Date: 13 November 2025

Refers: N/A

Details: Mariners are advised that berth remediation works, involving under wharf works and diving operations, will be undertaken at **South Wharf berth 32** from **17 November 2025** until further notice.

Works will be conducted **Monday to Saturday** from **0700 hrs to 1700 hrs** around shipping.

The following conditions will apply for **diving operations and works**:

1. When **diving operations** and / or **under wharf works** are within **50m** of a **berthed vessel**, the vessel is to be **notified by the works contractor**.
2. **30 minutes** prior to a commercial vessel (SOLAS), including the bunker vessel, entering **Swanson Dock Swing Basin, under wharf works and diving operations to cease**.
3. **30 minutes** prior to a commercial vessel (SOLAS), including the bunker vessel **passing within 50m** of the works area or **berthing at South Wharf 33, under wharf works and diving operations to cease**.
4. **No diving operations** will take place when **bunkering** is being conducted at South Wharf berth 33 or 31.
5. International Code flag Alpha displayed during diving operations.

Restrictions for passing **domestic commercial vessels** and **recreational vessels** during **works**:

- **Minimum wake and wash**
- **Minimum passing distance of 50m**

Vessels supporting works can be contacted on VHF Channel 12.

Mariners are advised to navigate with additional caution in the vicinity of South Wharf berth 32 during works.

For further information, please email the Navigation Services department at NavigationServices@ports.vic.gov.au or contact Melbourne VTS on 9644 9700 / VHF Channel 12.

**Charts &
Publications
affected:**

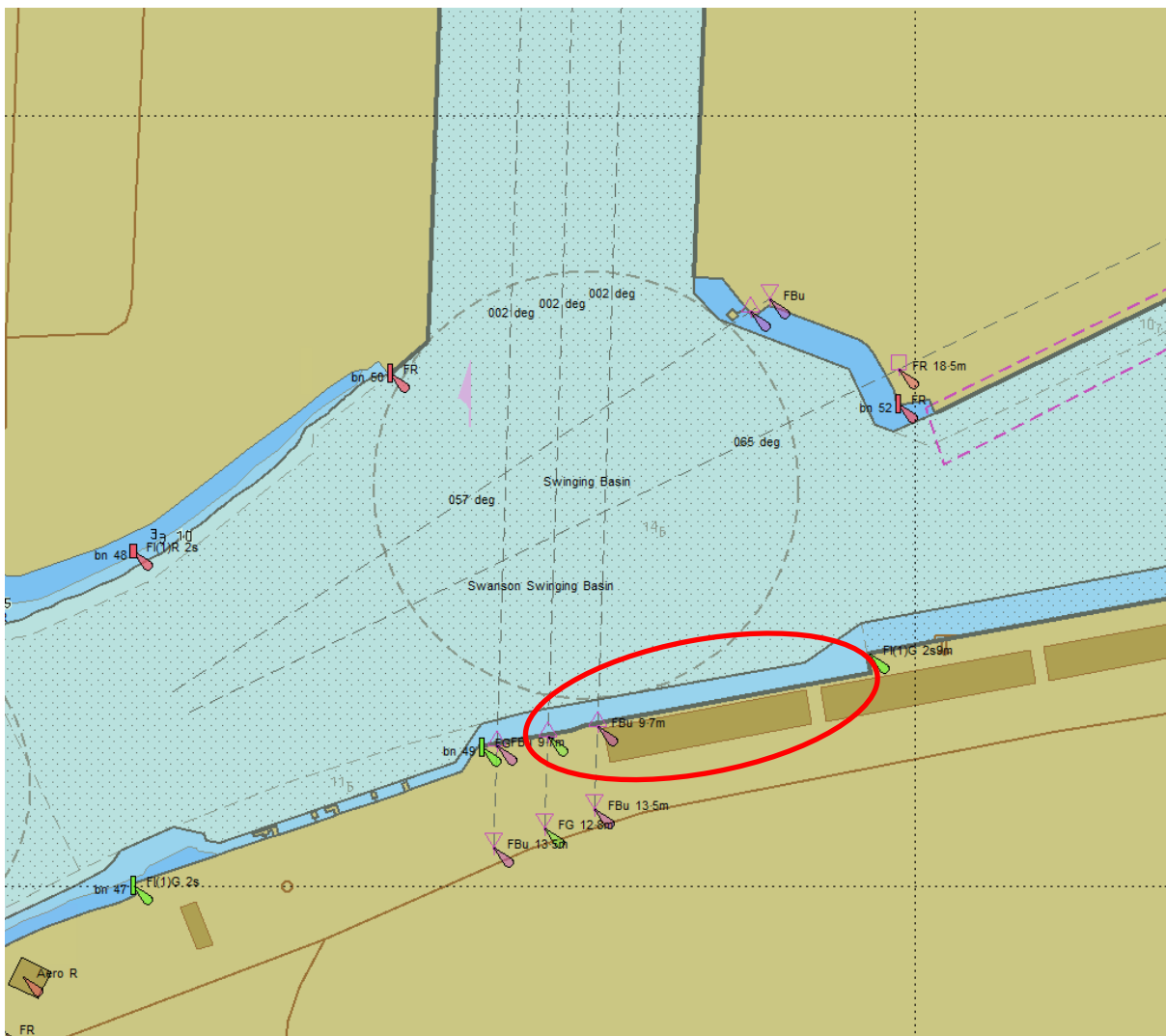
ENC AU5MEL01

Further notice:

Further notice will be issued



**David Tilsley
Deputy Harbour Master
Port of Melbourne**



NOT FOR NAVIGATIONAL USE