

Australia – Victoria

No. 335 (T) - 2025

PORT OF MELBOURNE SOUTH CHANNEL BEACON NO. 1 DESTROYED

Date: 20 June 2025

Refers: N/A

Details: Mariners are advised that **South Channel Beacon No. 1** (ADLL number: K 2322-3) located in position **38° 17.965' S 144° 42.424' E** has been destroyed.

The destroyed beacon pile is lying on the seafloor immediately to the west of its charted position.

The extremity of the destroyed beacon pile (beacon cage) presents a **least depth of 15.87m**.

The remaining beacon pile stump presents a **least depth of 16.09m**.

A **replacement beacon pile** (no top mark fitted) has been established in the vicinity of the destroyed beacon in the following position:

Characteristics	Position
Fl.G.3s	38°17.9655' S 144°42.4212' E

For further information, please email the Navigation Services department at NavigationServices@ports.vic.gov.au or contact Melbourne VTS on 9644 9700 or on VHF Channel 12.

Mariners are advised to navigate with additional caution in the vicinity of the destroyed beacon.

**Charts &
Publications
affected:**

AUS 143, AUS 144

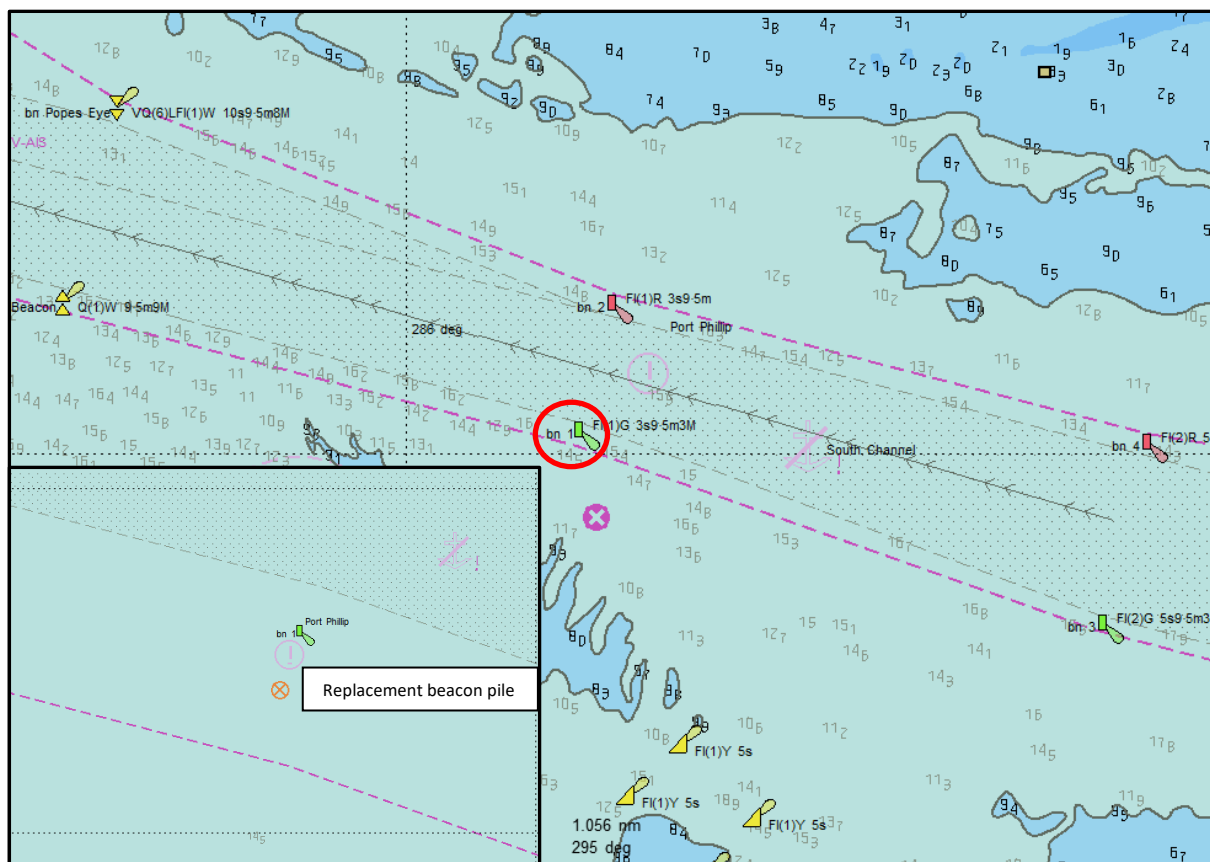
ENC AU5RIP01

Admiralty Digital List of Lights - Area 7 - Volume K

Further notice: Further notice will be issued

A handwritten signature in black ink, consisting of a large, stylized 'D' with a horizontal line through it and a small 'T' at the end.

David Tilsley
Deputy Harbour Master
Navigation Services



NOT FOR NAVIGATIONAL USE



REPLACEMENT BEACON PILE